

Campus Tree Advisory Committee

10.29.19.

Darren Thomas
Trent Johnston

Campus Tree Advisory Committee

- ▶ The Campus Tree Advisory Committee was established in 2012.

Charge:

The Clayton State University Tree Committee serves as an advisory committee to the Department of Facilities' Landscape Management working to maintain, manage, improve, renew and protect the trees on the University's campus and to share information with the campus community.

The committee meets twice a year or on an as-needed basis. Committee members are rotated every two years.

Members:

Darren Thomas
Trent Johnston
Harun Biswas
Priti Bhatia
Jere Boudell
Jill Lane
Brenda Carr
Brandon McKeown
Stephanie Grant
Trajan Bell
Keyanna Ennis
John Anderson (Community Member)

Campus Tree Advisory Committee

Goals:

- ▶ Educating the University community about the tree management plan and stewardship
- ▶ Giving recommendations for replanting
- ▶ Advising on tree-related issues on campus
- ▶ Reviewing the University's tree management plan
- ▶ Helping create approved and experimental tree lists
- ▶ Working to maintain our Tree Campus USA accreditation.

Property Damage

(Personal and State)



Tree Assessment



Right Tree for Right Location



Tree Management and Care Plan

- ▶ *Tree Assessment*
- ▶ *Arbor Day*
- ▶ *Tree Campus USA*

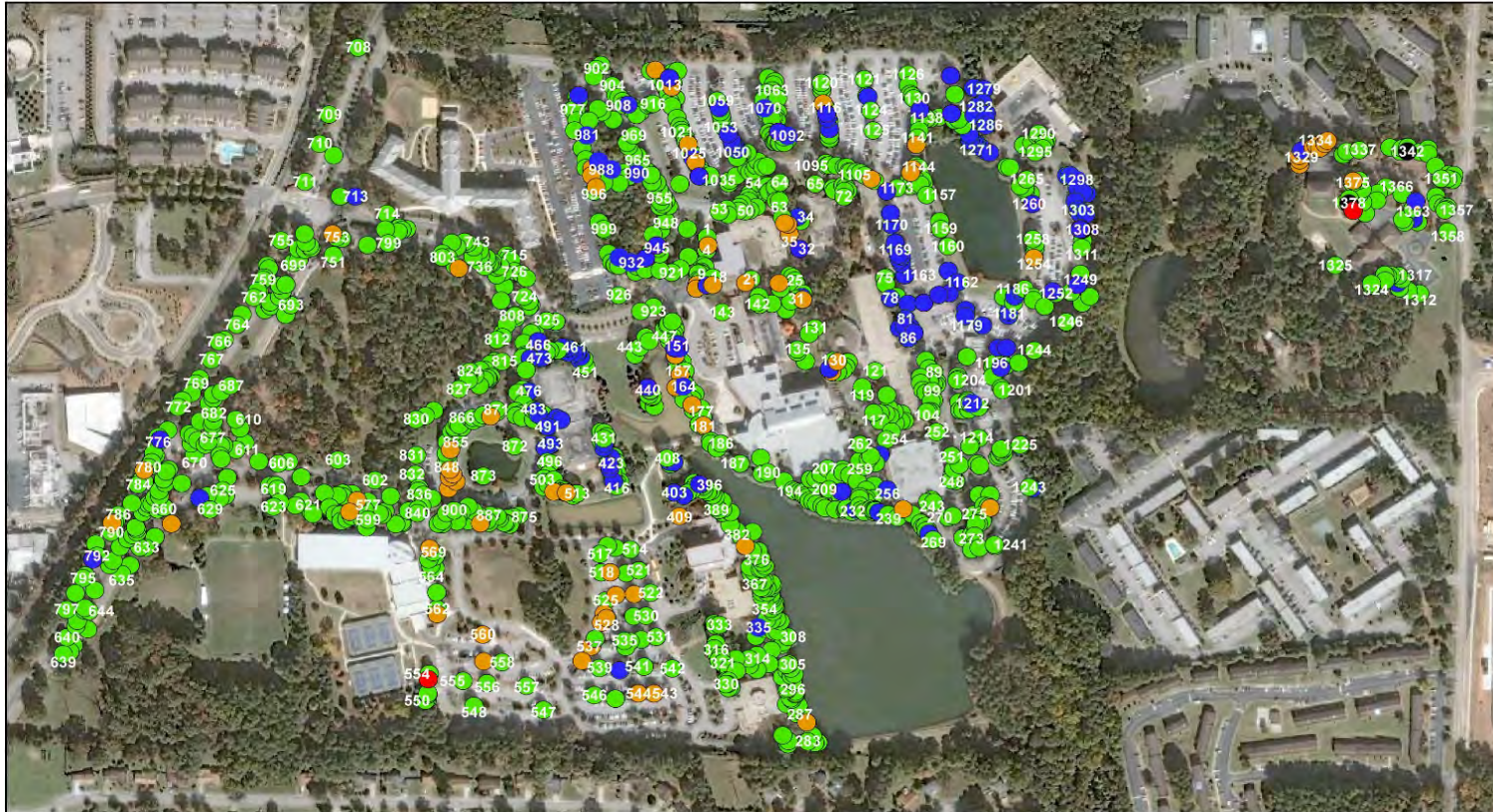


Tree Canopy Management for Campus

- ▶ Maintain a diverse landscape with a wide range of tree species
 - ▶ Provide various habitats for enjoyment and study on campus
 - ▶ Maintain a park like setting for students, faculty and staff
 - ▶ Provide homes to tree dwelling insects and animals
 - ▶ Continue to care for and maintain all trees so that future generations will be able to enjoy their benefits
 - ▶ The Clayton State University Landscape Management Department and the Campus Tree Advisory Committee is responsible for the Campus Tree Care Plan.
- ▶ *Tree assessment*
 - ▶ *Tree removal*
 - ▶ *Tree selection*
 - ▶ *Site preparation*
 - ▶ *Tree planting*
 - ▶ *Mulching*
 - ▶ *Pruning*
 - ▶ *Irrigation*
 - ▶ *Insurance and value*

Tree Campus GPS Map

Clayton State University
Trees by Condition Class



0 125 250 500 750 1,000
Feet

- Good
- Fair
- Poor
- Removed



**BARTLETT
TREE EXPERTS**

SCIENTIFIC TREE CARE SINCE 1907

Arbor Day Celebration



Tree Campus USA Standards



- ▶ **STANDARD 1: Campus Tree Advisory Committee**
- ▶ **STANDARD 2: Campus Tree Care Plan**
- ▶ **STANDARD 3: Dedicated Annual Expenditures for Campus Tree Care Program**
- ▶ **STANDARD 4: Arbor Day Observance**
- ▶ **STANDARD 5: Service Learning Project**

Tree Campus USA Recognition



Thank You



Questions