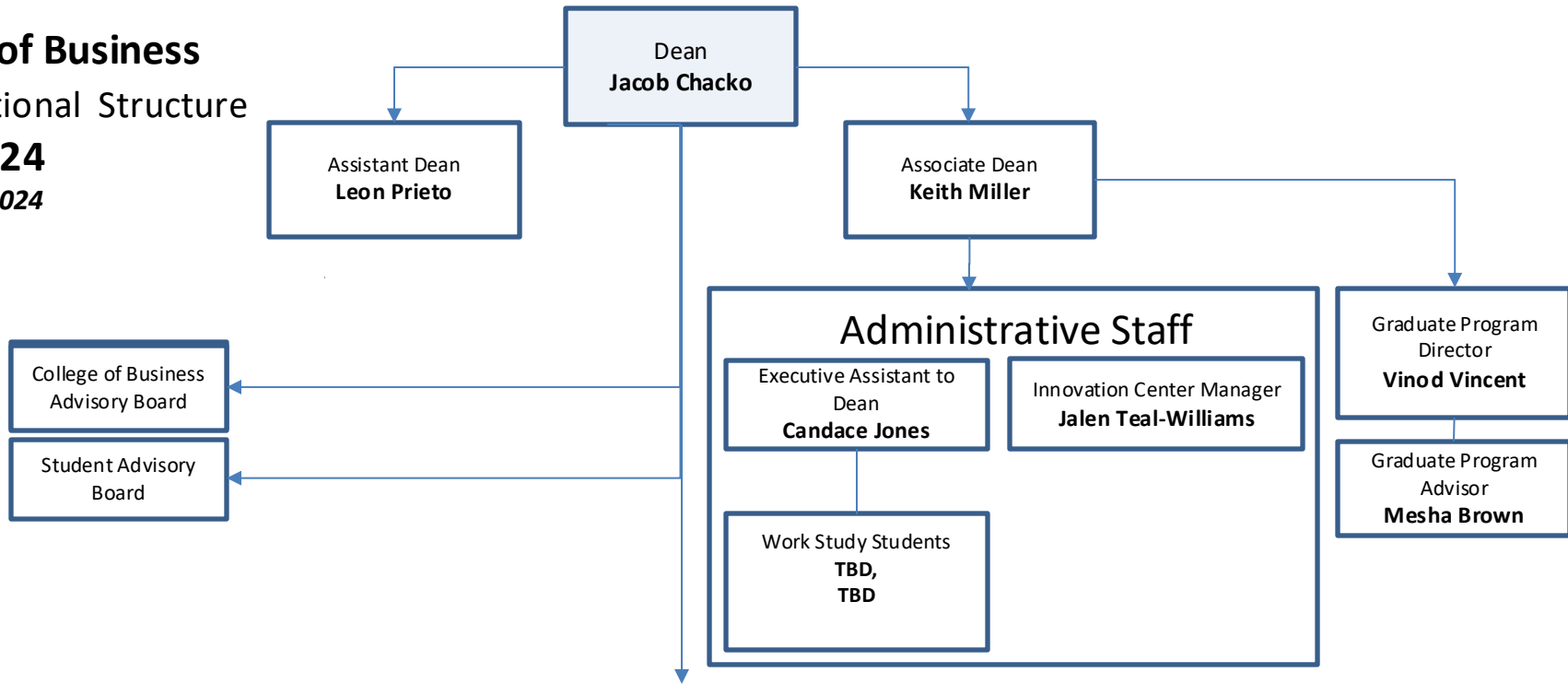


**College of Business**  
**Organizational Structure**  
**2023-2024**  
*As of: 1/1/2024*



<b>Centers</b>	<b>R. Kheirandish -Dept. Chair Accounting, Economics, and Finance</b>	<b>K. Johnson- Dept. Chair Management, Marketing, and Supply Chain Management</b>	<b>Academic &amp; Experiential Programs</b>
<p>Small Business Development Center</p> <p><b>Govantez Lowndes</b> Director <b>Chelsea Howell</b> - Program Coordinator- <b>Richard Schnitker</b>-Consultant</p>	<p><b>Accounting</b> K. Bilbeisi K. Cotter-Reilly A. Hannah A. Novin L. Orchard</p> <p><b>Economics</b> I. Hayduk B. Hunt J. Zinn</p> <p><b>Finance</b> C. Lin C. Narayanaswamy</p> <p><b>VITA Program Coordinator</b> A. Hannah</p>	<p><b>Management</b> A. Adams      S. Reynolds E. Davis      M. Robertson L. Menter     M. Thompson L. Prieto      V. Vincent</p> <p><b>Marketing</b> J. Hain G. Nakos M. Norman M. Rokonuzzaman A. Whiting</p> <p><b>Supply Chain Management</b> C. Hill C. Lightner-Laws K. Moghaddam</p>	<p>Analytics Spine Coordinator <b>Reza Kheirandish</b></p> <p>Career Spine Coordinator <b>Kimberly Johnson</b></p> <p>Internship Coordinator <b>Kimberly Johnson</b></p> <p>Executive in Residence <b>Richard Sylvia</b></p>
<p>Center for Supply Chain Management <b>Carin Lightner-Laws</b></p>			
<p>Center for Economic Stability and Trends <b>Iryna Hayduk</b></p>			
<p>Director Center for Social Innovation and Sustainable Entrepreneurship <b>Leon Prieto</b></p>			
<p>Center for Women in Leadership <b>Margaret Thompson</b></p>			