

# Science Specific Alt-Text Assessment Guidance

## Alt Text in Assessments

Providing alt text for quiz and exam images does **not** require revealing the correct answer. The goal of accessible image descriptions in assessments is to provide equivalent access to the visual information that a sighted student would use to reason toward the answer.

Alt text for assessment images should:

- Identify the image modality (e.g., MRI, histology, ECG)
- Describe observable features (location, morphology, pattern)
- Provide relevant spatial or structural relationships
- Remain neutral and non-interpretive

Alt text should **not**:

- Name the structure, diagnosis, or concept being assessed
- Provide interpretive conclusions
- Supply additional information not visible in the image

## Reusable Template for Quiz Image Descriptions

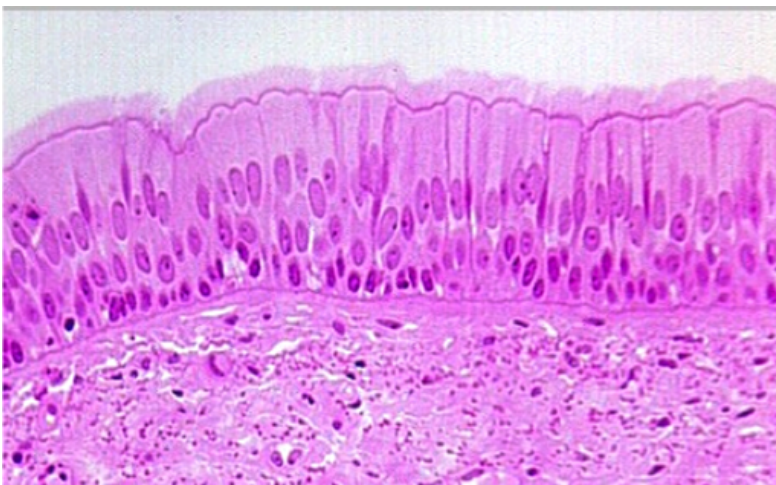
Image showing [modality or specimen] with [objective, observable features], relevant to identifying [structure, condition, or pattern].

Avoid:

- Diagnostic terms (unless question is about something else)
- Structure names when they are the answer
- Interpretive phrases like “consistent with”

## Example 1: Histology Question

Q: Which epithelial type is shown in this image?

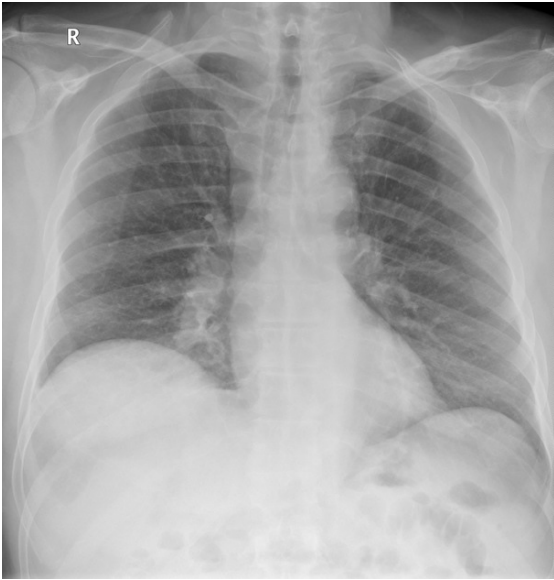


Incorrect image description: Microscopic image of pseudostratified ciliated columnar epithelium.

Correct Image Description (Accessible but Neutral): Microscopic image of epithelial tissue showing tall cells with nuclei positioned at different heights and visible cilia along the apical surface.

## Example 2: Radiology Question

Q: What is the most likely diagnosis?



Incorrect image description: Chest X-ray showing right lower lobe pneumonia.

Correct Image Description (Accessible but Neutral): Frontal chest radiograph showing a focal area of increased opacity in the right lower lung field.

## Example 3: ECG Question

Q: What rhythm is present?

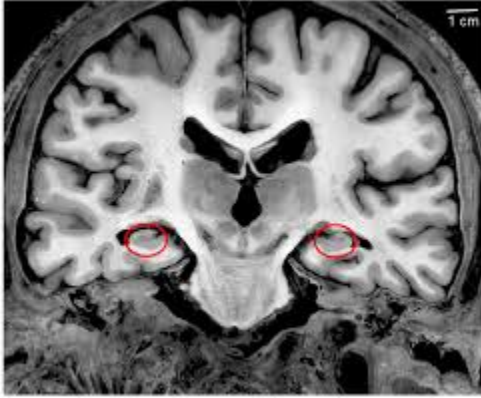


Incorrect image description: ECG showing atrial fibrillation.

Correct Image Description (Accessible but Neutral): ECG tracing demonstrating an irregularly irregular rhythm without clearly identifiable P waves.

#### Example 4: Neuroanatomy Diagram

Q: Which structure is within the red circle?



Incorrect image description: Coronal MRI showing the hippocampus circled bilaterally in red.

Correct Image Description (Accessible but Neutral): Coronal MRI image of the brain showing symmetrical regions in the medial temporal lobes outlined bilaterally with red circles. The highlighted structures are located inferior to the lateral ventricles and medial to the surrounding temporal cortex and are provided for anatomical identification.