

Spine Label Printing in OCLC's Connexion Client

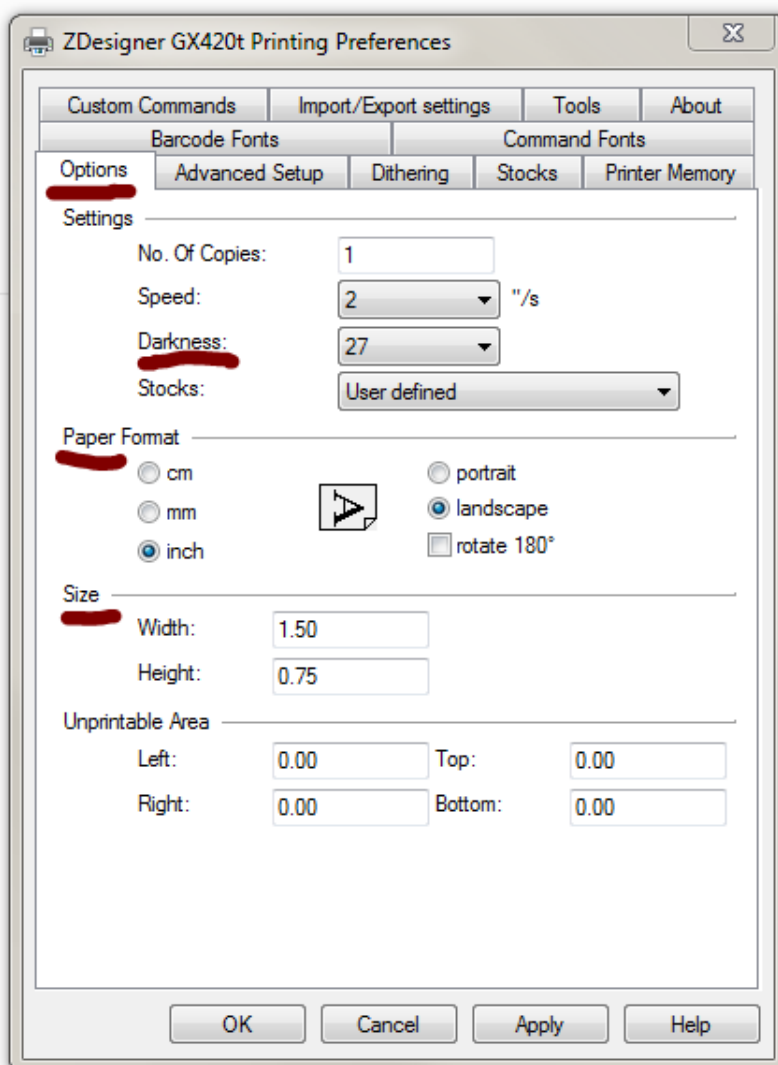
with the Zebra Label Printer GX420t in Windows 7

April 28, 2015

Heather Walls, Cataloging Assistant
Clayton State University Library

Installation of the printer driver in Windows 7 was very straight forward, with nothing unusual.

Once the driver is installed, make these changes in the **Printer Driver's Printing Preferences** window:

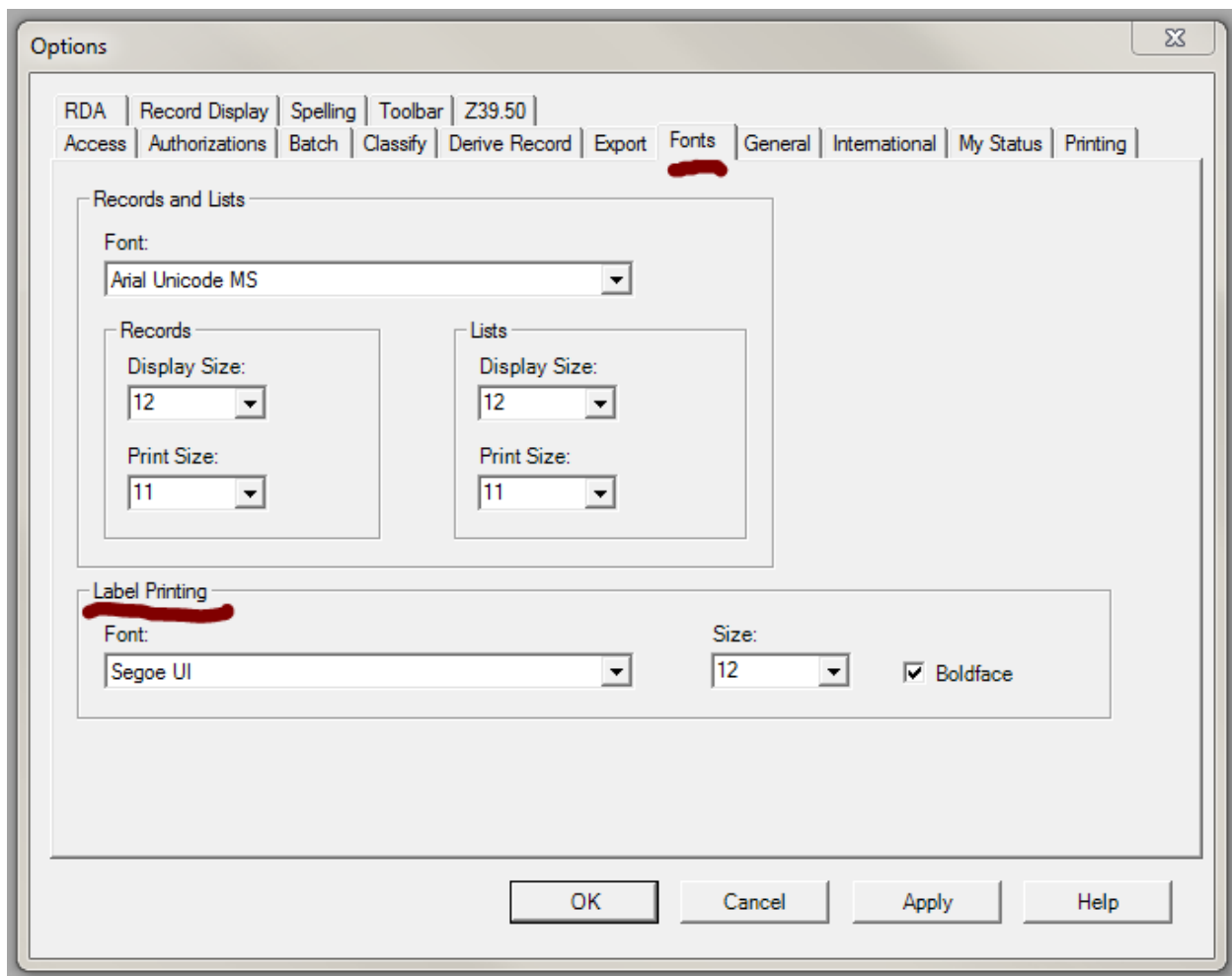


Darkness – the scale ranges from 1-30, darker printed better

Paper format – for label stock that is on the roll horizontally, be sure to choose landscape

Size – enter the size of your label stock **as it appears on the roll**.

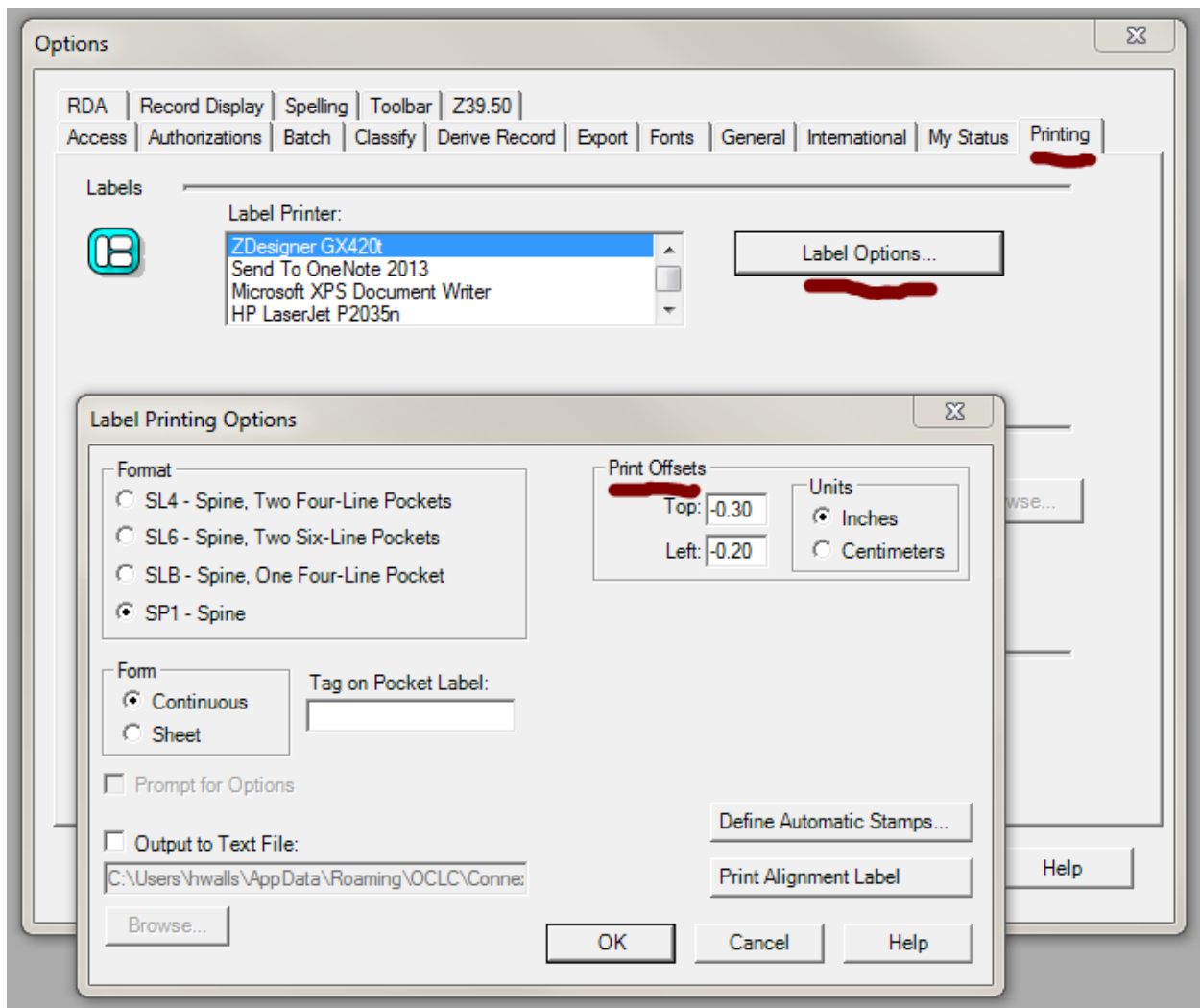
Inside Connexion, under Options -



FONTS –

Segoe UI seems to print the cleanest of all the fonts sampled, but try others to see which works best for you.

The choice of 12 pt. bold was just based on aesthetics.



PRINT OFFSETS –

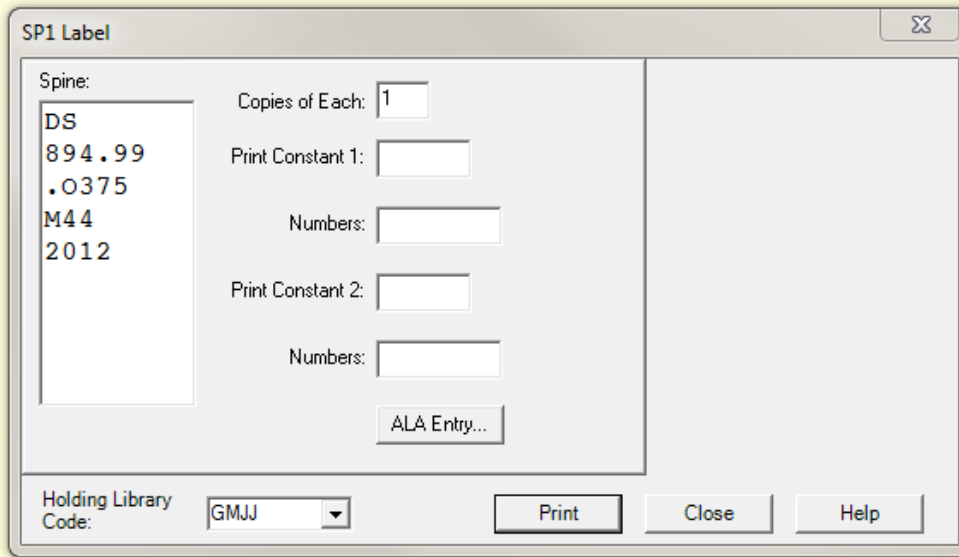
These turned out to be very important. Notice that they are **negative numbers**.

Top offset of -0.30 and Left offset of -0.20 will line up the printed info with the label stock in a way that allows 7 lines of text at approx. 7 characters of width (with the font that was chosen above).

On the rare times of needing 8 lines of text, the Top offset can be changed to -0.43

(The above settings are for label stock that measures 1.50" x 0.75" and is on the roll horizontally. Different sized label stock will most likely need different print offset settings, but they will probably be close to these numbers.)

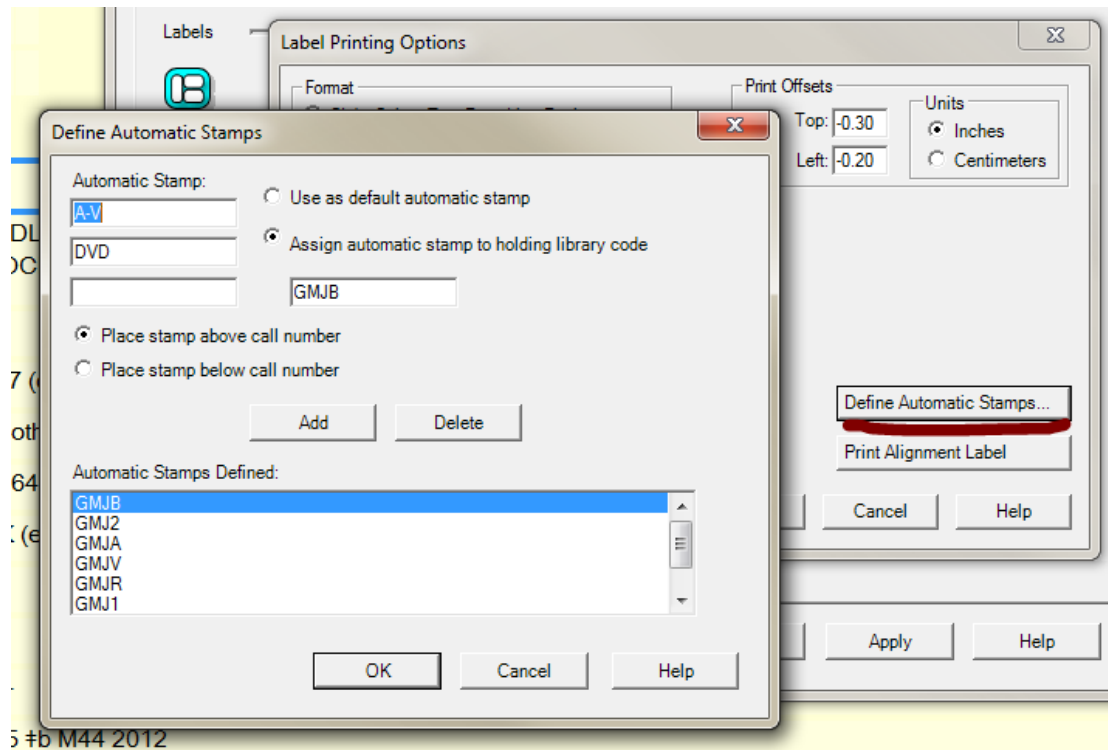
In Connexion with a Bib Record open, open the View Label window (F10)



Changes to the label can be made in this window.

Changes can be made directly in the Spine box (ie. adding a prefix) or can be made using the Print Constant fields (for printing multiple labels for multiple volumes or copies).

Prefixes can also be added using the Automatic Stamp feature (accessible through the Label Printing Options window – see above), which will link them to your library's various Holding Codes and automatically apply them when the label window is opened.



5 #b M44 2012

All of the settings outlined above should produce labels very similar to the ones pictured here.

Good luck!

